



WELCOME

LE LOUISE HOTEL BRUSSELS

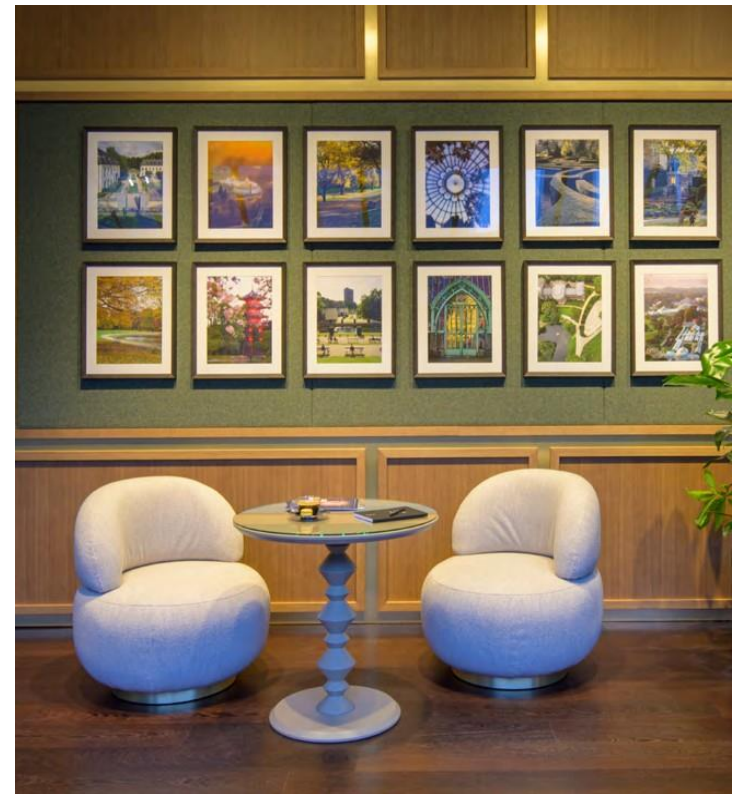
1

---

LE LOUISE HOTEL BRUSSELS

« AWAKEN YOUR SENSES IN STYLE »

A TRIBUTE TO THE CITY OF BRUSSELS,  
ITS PEOPLE, ARCHITECTURE & GARDENS



---

Le Louise Hotel Brussels -MGallery - 40 Avenue de la Toison d'Or, 1050 BRUSSELS, BELGIUM

---

LE LOUISE HOTEL BRUSSELS



- Fully renovated Hotel
- Central location & easy to access  
1km from city center & Grand Place 100m from Louise Metro Station  
Located in the exclusive «Louise» area:  
High-end shopping hub in the heart of the city
- 159 loungy guestrooms & 10 Suites
- 8 Meeting Rooms with natural day light
- Unique Terrace, our Urban Gem (400 sqm Terrace)
- Maison Louise Restaurant & Wine Bar  
by Cheffe Isabelle Arpin
- Mister Blue Cocktail Bar with Terrace access
- Conciergerie Service by Mariano - Président «Les Clefs D'or»

OUR ROOMS  
&  
AMENITIES

---

## OUR ROOMS & AMENITIES

### SUPERIOR & DELUXE ROOM



- King or Twin bed
- Room size: 24m2, City or Garden view
- HD Television
- Nespresso coffee machine & kettle

- Laptop safe
- Bathroom with rain-style shower or bathtub
- L'Occitane en Provence products
- Working & dining space

---

OUR ROOMS & AMENITIES

HOMMAGE SUITE

Enter the world of a beloved Brussels' personality with our Hommage Suite



Audrey HEPBURN



PEYO



Marguerite YOURCENAR

---

## OUR ROOMS & AMENITIES

### BOTANIC SUITE



- King or Twin bed
- Room size: 50m2, Garden view
- HD Television
- Nespresso coffee machine & kettle
- Dressing room

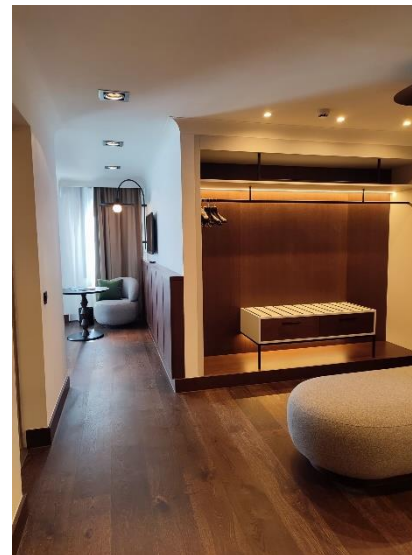
- Laptop safe
- Bathroom with rain-style shower or bathtub
- L'Occitane en Provence products
- Separate living working & dining space



---

## OUR ROOMS & AMENITIES

### LE LOUISE SUITE



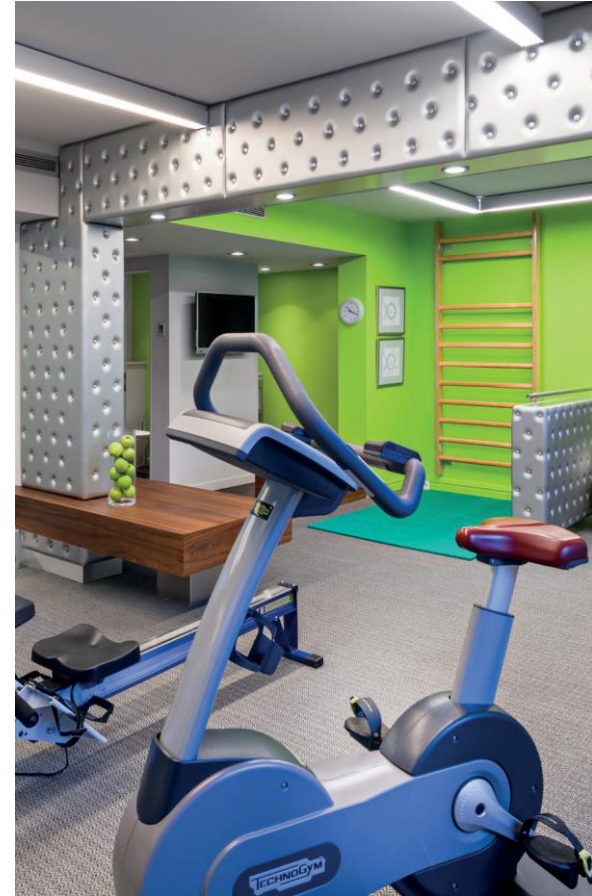
- King Bed
- Room size: 95m2, Garden & city view
- HD Televisions
- Nespresso coffee machine & kettle
- Dressing room –

- Separate living & dining room
- Bathub & rain-style shower
- L'Occitane en Provence products
- Laptop safe

# FITNESS

FITNESS

FITNESS ROOM



# OUR MEETING ROOMS

MEETING ROOMS



SALON JUNGLE



SALON COLOMBE



SALON ELEPHANT



SALON MÉTAMORPHOSE

MEETING ROOMS



ALCÔVE



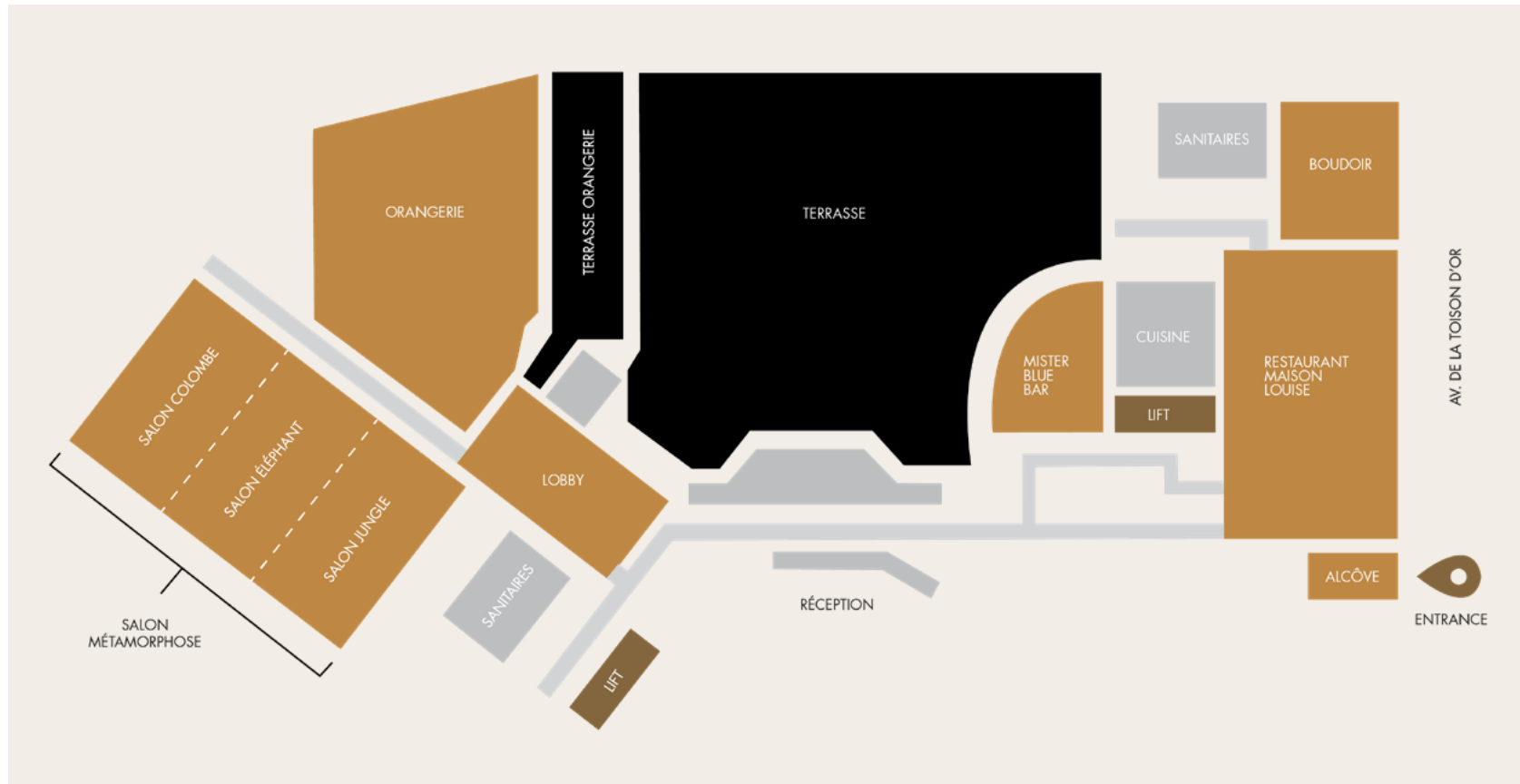
BOUDOIR

ORANGERIE



## MEETING ROOMS

## HOTEL LAYOUT



## MEETING ROOMS

## CAPACITY CHART

|                        |     | DAY LIGHT | A/C     | CLASS-ROOM | THEATER | U-SHAPE | BOAR-DROOM | BANQUET | CABARET | COCKTAIL |
|------------------------|-----|-----------|---------|------------|---------|---------|------------|---------|---------|----------|
| <b>JUNGLE</b>          | 80  | ✓         | ✓       | 40         | 70      | 30      | 28         | 40      | 35      | 60       |
| <b>ELEPHANT</b>        | 80  | ✓         | ✓       | 40         | 70      | 30      | 28         | 40      | 35      | 60       |
| <b>COLOMBE</b>         | 80  | ✓         | ✓       | 40         | 70      | 30      | 28         | 40      | 35      | 60       |
| <b>METAMORPHOSE I</b>  | 160 | ✓         | ✓       | 80         | 150     | 45      | 45         | 88      | 70      | 150      |
| <b>METAMORPHOSE II</b> | 240 | ✓         | ✓       | 108        | 180     | -       | -          | 120     | 105     | 200      |
| <b>ORANGERIE</b>       | 160 | ✓         | ✓       | -          | 80      | -       | -          | 100     | 80      | 150      |
| <b>BOUDOIR</b>         | 48  | ✓         | ✓       | 12         | 20      | 10      | 12         | 25      | -       | 30       |
| <b>ALCÔVE</b>          | 19  | ✓         | ✓       | -          | -       | -       | 8          | -       | -       | -        |
| <b>TERRASSE</b>        | 300 |           | -       |            |         |         |            | 200     |         | 300      |
|                        | 200 | ✓         | heating | -          | -       | -       | -          | 140     | -       | 200      |
| <b>Totale</b>          |     | ✓         |         |            |         |         |            |         |         |          |
| <b>Partielle</b>       |     | ✓         |         |            |         |         |            |         |         |          |



## ACCOR MEETING PLANNER



Accor rewards your loyalty by welcoming you to the exclusive Le Club AccorHotels Meeting Planner program, offering you a world of top-quality tailored benefits.

- Free Card
- Available in all AccorHotels Venues
- Spend 2€ = 1 point
- Points available with our partners among airlines, travel agencies
- Easy to subscribe

MEETING ROOMS

GARDEN TERRACE  
400 SQ M TERRACE



RESTAURANT  
&  
BAR

---

Le Louise Hotel Brussels - MGallery - 40 Avenue de la Toison d'Or, 1050 BRUSSELS, BELGIUM

## RESTAURANT &amp; BAR

## MAISON LOUISE RESTAURANT &amp; WINE BAR

Coming to Le Louise Hotel Brussels means discovering Maison Louise Restaurant & Wine Bar, whose menu is signed by cheffe Isabelle Arpin and executed by Adwin Fontein.

Together, they honor Belgian cuisine.



## RESTAURANT &amp; BAR

## MISTER BLUE BAR

Jazz is in the air. Our bar is in reference of **DJANGO REINHARDT** Apart from the classic cocktails and spirits, you can enjoy some very personal and original creations like Nuage cocktail.



MGallery

Inspired By Her

## Beauty

- Full length mirror
- Latest Generation hair dryer
- Bathrobe & slippers in S&M size
- L'Occitane en Provence products

## F & B

- Feminine touch at Maison Louise Restaurant & Wine Bar
- Menu signed by Cheffe Isabelle Arpin with edible flowers



## INSPIRED by her



Drinks & Dishes  
Inspired by women

High  
quality  
hair dryer

## BASIC



Make-up mirror

Drinks & Dishes  
Inspired by women



Smaller-sized bathrobes  
and slippers

## MEMORABLE MOMENTS

Discover Brussels thanks to the suggestions of our concierge Mariano, Capital of comics, art nouveau, chocolate, bargain hunters, or Europe, Brussels reveals so many facets, take the side roads!



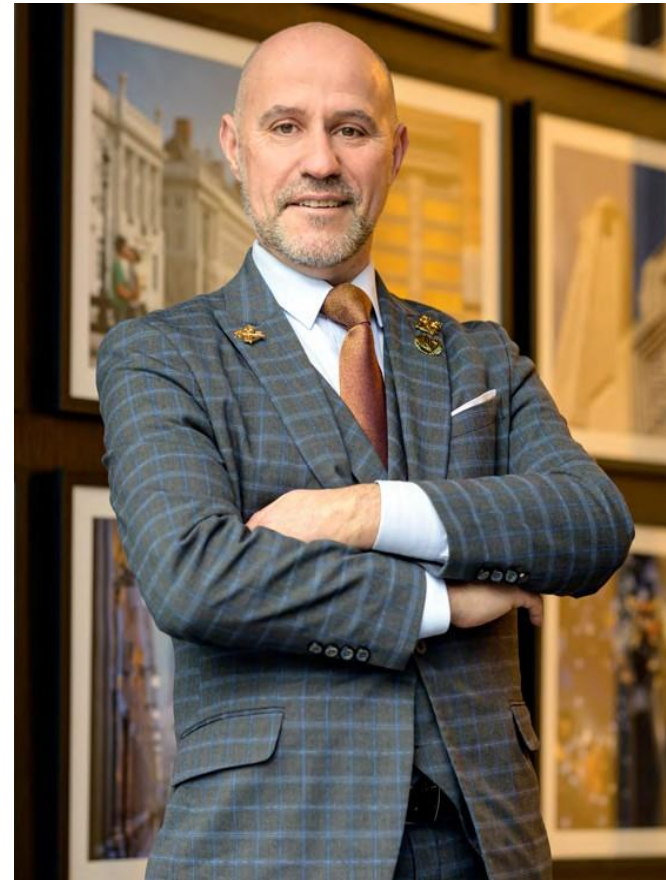
Stuyvenberg Florist Gardens

Created in the 19th century, on the initiative of King Leopold II, designed by the famous landscape architect Emile l'Amé, this remarkable garden....



Gaasbeek Castle

Located 30 minutes from Brussels, this castle dating from the 13th century for its foundations is a remarkable summary of the history of Brussels.





## MEMORABLE MOMENTS

## Bayer &amp; Bayer

A masculine interlude, a unique place, the best «Figaro» blades at your disposal for a royal service! A beard, shaved or trimmed to the millimeter in the purest tradition! In a unique atmosphere of «barbershop» revisited! A hairdressing service that will give you confidence and pride! A few attentive treatments accompanied by a cocktail! Delicate attention to remind you of that cozy moment! There is nothing like it to make you feel wonderful and seductive.

Brussels and its secrets are yours!



## L'Antichambre

A unique souvenir of a Brussels escapade, Why not immortalize it by creating your own perfume, a unique fragrance that will bear the name you have chosen. This perfume will resemble you, will sublimate you, will mark your memories forever. This formula will be yours, exclusive, its reproduction will be possible only with your consent!

You will be taken in hand by Pascale in this olfactory exploration; the different essences that you will select will be assembled by her to obtain the perfect fragrance! Your formula will be jealously guarded, totally exclusive, it can only be reproduced with your permission. Whatever the occasion, only you will know its secrets.

If diamonds are eternal, this perfume will be unique...



# BRUSSELS

---

Le Louise Hotel Brussels - MGallery - 40 Avenue de la Toison d'Or, 1050 BRUSSELS, BELGIUM

## BRUSSELS

## BRUSSELS INTERNATIONAL LOCATIONS

**BY TRAIN:**

ANTWERP : 40 min

PARIS : 1h30

AMSTERDAM : 2h

LONDON : 2h

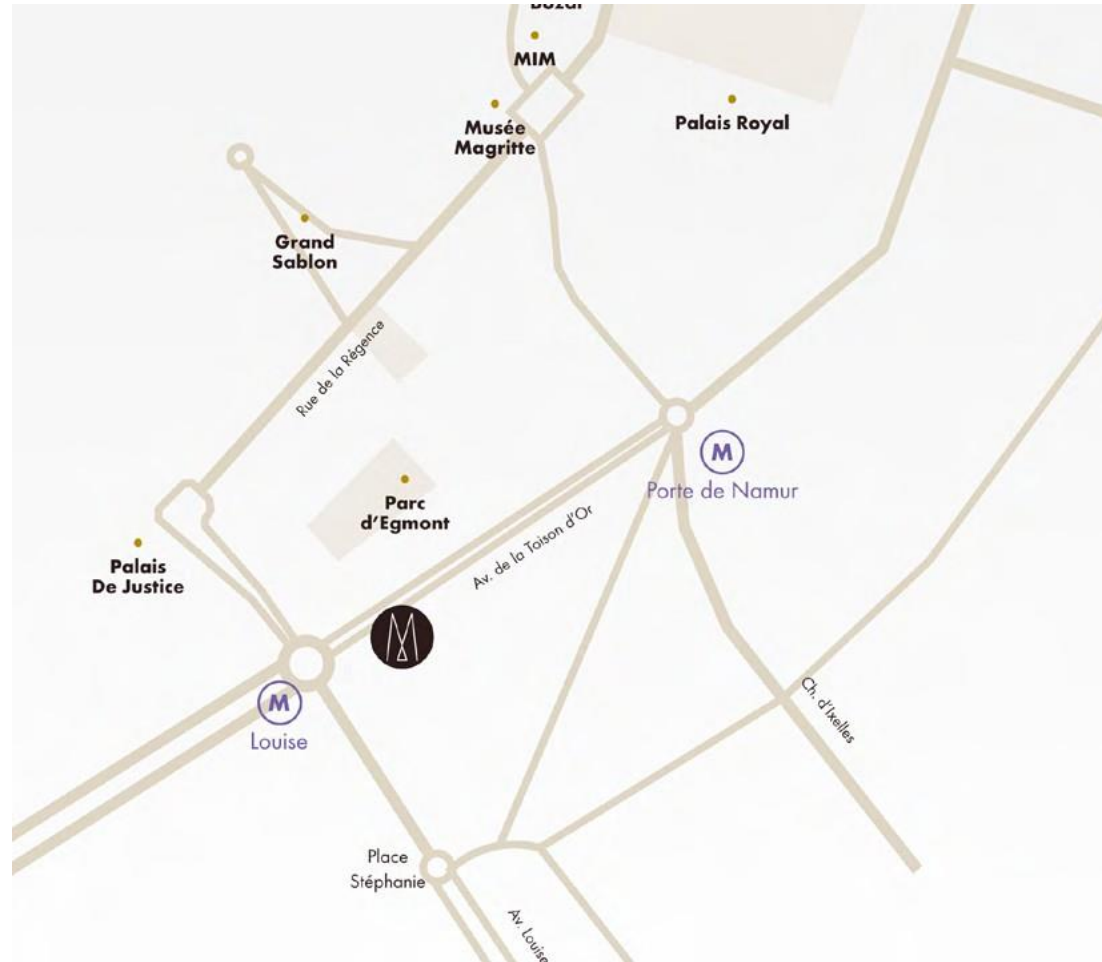
**BY PLANE:**

BERLIN : 1h

FRANKFURT : 1h

## BRUSSELS

## BRUSSELS

**BY CAR:**

|                      |        |
|----------------------|--------|
| EUROPEAN COMMISSION: | 10 min |
| BRUSSELS AIRPORT :   | 16 min |
| ZAVENTEM:            | 16 min |

**BY WALK:**

|                                  |        |
|----------------------------------|--------|
| EU PARLIAMENT :                  | 18 min |
| SQUARE-BRUSSELS MEETING CENTER : | 14 min |
| GRAND PLACE :                    | 17min  |
| PLACE DU GRAND SABLON :          | 8 min  |
| PALAIS DE JUSTICE :              | 5 min  |
| MAGRITTE MUSEUM :                | 12 min |
| GARE DU MIDI - BRUSSELS :        | 12 min |
| GARE CENTRAL:                    | 8 min  |
| ZAVENTEM:                        | 16 min |

## REASONS TO VISIT BRUSSELS



### Cosmopolitan & Dynamic City

- More than 45 different nationalities
- One of the greenest cities in Europe
- Music Festival

### European Capital

- Seat of the European Parliament & Institutions
- Historical & touristic venues:
  - Grand Place & its 16th & 17th century houses
  - Royale Palace & its sumptuous park
  - International museums: Magritte, BOZAR, Musical Instruments, HORTA, Comics, Atomium

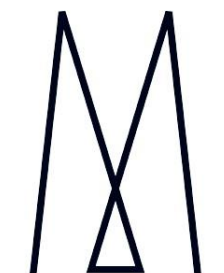
### Traditional Belgian Gastronomy

- Enjoy chocolate tastings & visit traditional breweries
- Savor an authentic Belgian cuisine



LE LOUISE

MGALLERY  
HOTEL COLLECTION



GALLERY

HOTEL  
COLLECTION

Reception / Front Office

[H1071@accor.com](mailto:H1071@accor.com)

Phone Number: +32 (0)2 514 22 00

Site Internet:

[www.le-louise-brussels.com](http://www.le-louise-brussels.com)

Meetings & Events

[H1071-SB@accor.com](mailto:H1071-SB@accor.com)

+32 254 9 61 24

Marion AUBRY

Sales & Marketing Manager

[marion.aubry@accor.com](mailto:marion.aubry@accor.com)

+ 32 485 21 65 67